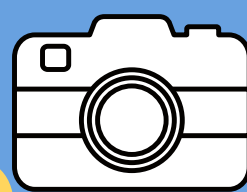


Sut i...



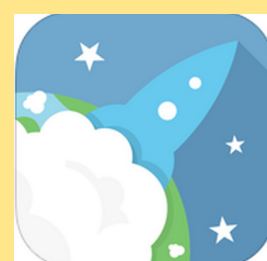
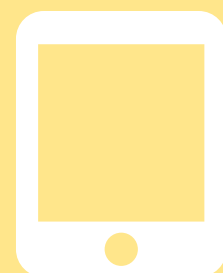
UWCHLWYTHO LLUNIAU O'CH GWAITH

Os ydych wedi cyflawni eich gwaith ysgol ar bapur, dyma sut i dynnu llun o'ch gwaith a'i uwchlwytho i J2Launch.

CAM 1

LAWRLWYTHO AP J2LAUNCH

- Lawrthlwythwch ap J2Launch i'ch ffôn symudol neu dabled.
- Mae'r ap yn rhad ac am ddim ac yn ddefnyddiol iawn.



CAM 2

MEWNGOFNODI I AP J2LAUNCH

- Agorwch ap J2Launch ac yna fewngofnodwch drwy glicio ar yr eicon 'Hwb'.
- Defnyddiwch eich manylion 'Hwb' i fewngofnodi.



CAM 3

CYMERWCH Y LLUN

- Cliciwch ar y symbol ar ochr dde'r sgrin.
- Cliciwch ar yr eicon camera.
- Cymerwch lun o'ch gwaith.
- Yna, gliciwch ar 'Use photo'



Os ydych am uwchlwytho llun yr ydych eisoes wedi cymryd, cliciwch ar yr eicon 'Upload' a dilynwch y camau..

CAM 4

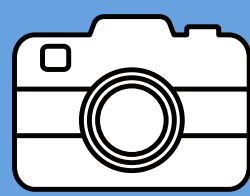
SYMUDWCH Y LLUN

- Fe fydd y llun yn cael ei achub i'ch 'Fy ffeiliau'.
- Symudwch y llun i'r man iawn trwy ei lusgo i'ch ffeil 'Tymor yr Haf'.



Gorau dysg, cyd-ddysgu

How to...



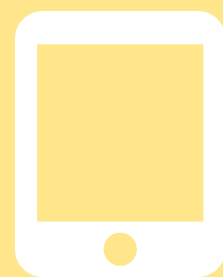
UPLOAD PICTURES OF YOUR WORK

If you have completed your school work on paper, here's how to take a picture of it and upload it to J2Launch.

STEP 1

DOWNLOAD THE J2LAUNCH APP

- Download the J2Launch app to your smart phone or tablet.
- The app is free and very useful.



STEP 2

LOG IN TO THE J2LAUNCH APP

- Open the 'J2Launch' app and click on the red 'Hwb' icon.
- Use your 'Hwb' details to log in.



STEP 3

TAKE THE PICTURE

- Click on the symbol on the top right of the screen.
- Then, click on the camera icon.
- Take a picture of the work.
- Then, choose 'Use photo'.



If you already have a picture of your work saved to your device, click on the 'Upload' button and follow the steps.

STEP 4

MOVE THE PICTURE

- The picture will be stored to 'MyFiles'.
- Move the picture to your 'Summer Term' file using drag and drop.

